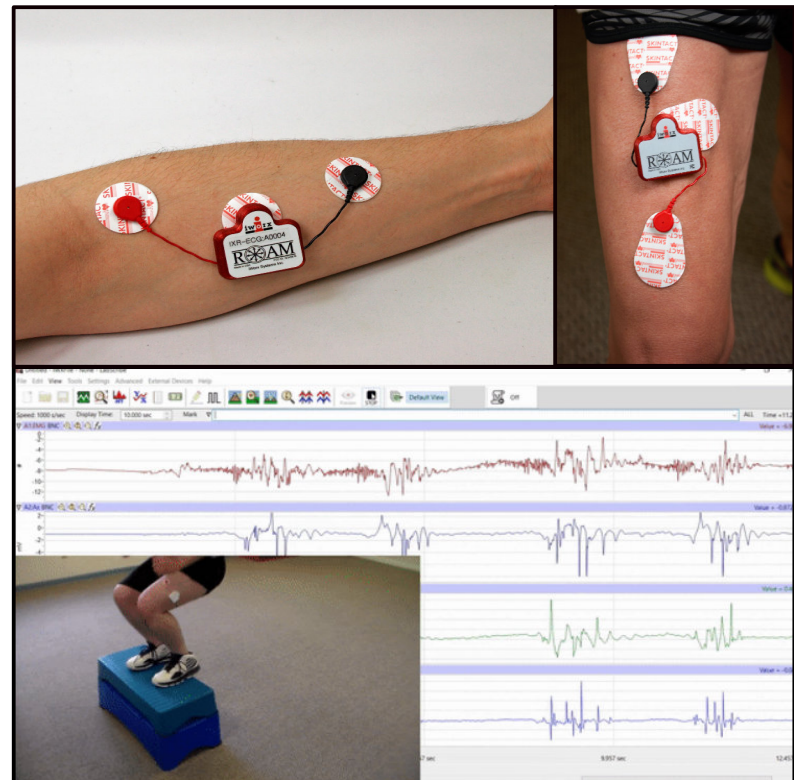
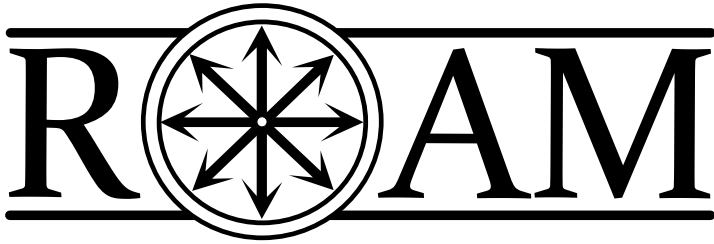


iWorx ROAM-EMG

Wireless and Wearable EMG System

The iWorx ROAM EMG is a wearable, wireless system designed to provide long-term recording and unrestricted movement. The recording device easily attaches to the subject with standard electrodes. The protective case doubles as a charging station. The system works with both Windows and MacOS via standard USB interface. Data can be quickly analyzed with the included LabScribe analysis software or exported directly for other processing. The ROAM Wireless allows for hours of continuous recording with an untethered reach of 20 feet.



Features

- 8+ Hours of Continuous Recording
- Plug and Play Technology
- PC and Mac
- USB-Powered
- Fully Modifiable Filters
- Included Analysis Software

Includes

- ROAM-EMG Recorder
- ROAM-Wireless Receiver
- Retractable-USB Cable
- LabScribe 4.0 Analysis Software
- Hard-Shell Case

