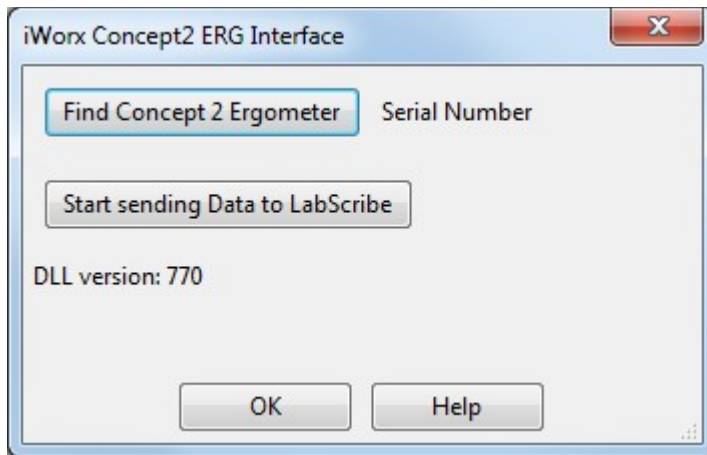


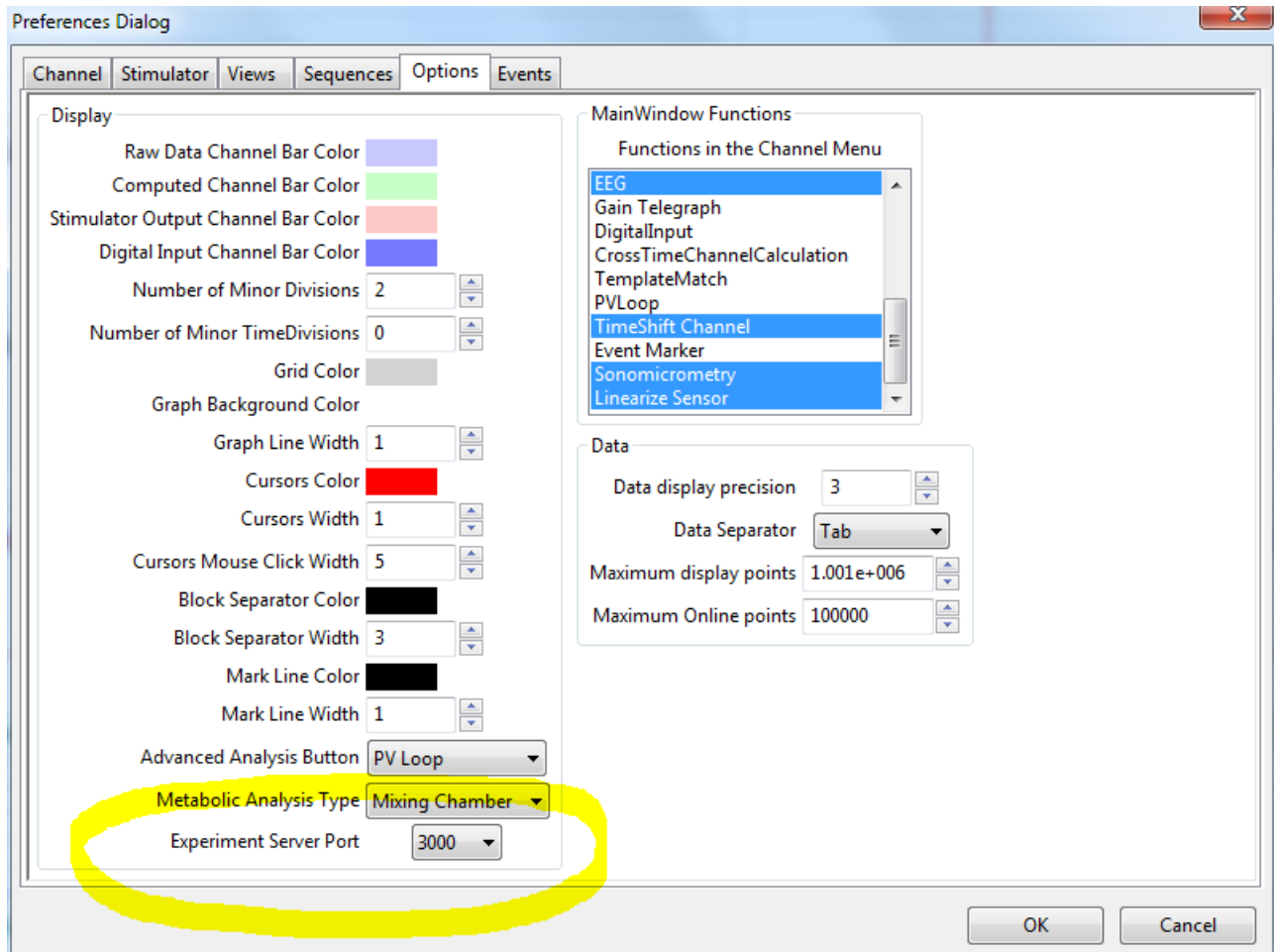
iWorx Concept 2 Ergometer Interface.

iWorxC2Interface is a utility that reads the power value from a Concept 2 Ergometer using a PM3 or a PM4 performance monitor, and sends it to LabScribe v3 to allow the Ergometer power to be used in metabolic calculations.

- Launch the iWorxC2Interface.exe program.



- Connect the Concept2 performance monitor to the computer via the USB cable.
- Click on the ***Find Concept 2 Ergometer*** button.
- The program will connect to the Ergometer and display the serial number of the performance monitor.
- Launch LabScribe v3. Go to Edit->Preferences, Option Tab. Check that the Experiment Server Port is set to 3000.



- Load the desired settings file in LabScribe v3 and click **Record** in LabScribe.
- Click the **Start sending Data to LabScribe** button. The first time you click this, the program will ask for the serial number. Please enter the provided serial number. If you do not have a serial number, contact iWorx Systems Inc. by either sending an email to info@iworx.com or calling +1-603-742-2492.
- The iWorxC2Interface will now connect to LabScribe v3 and start sending the power values to LabScribe. When you want to stop sending data to LabScribe, click the **Stop sending Data to LabScribe** button.
- Power values are not displayed by default in the main window in LabScribe v3, you can view them in the marks window. They are automatically used by the Metabolic Calculation Analysis Module, if you do not select an Energy channel.