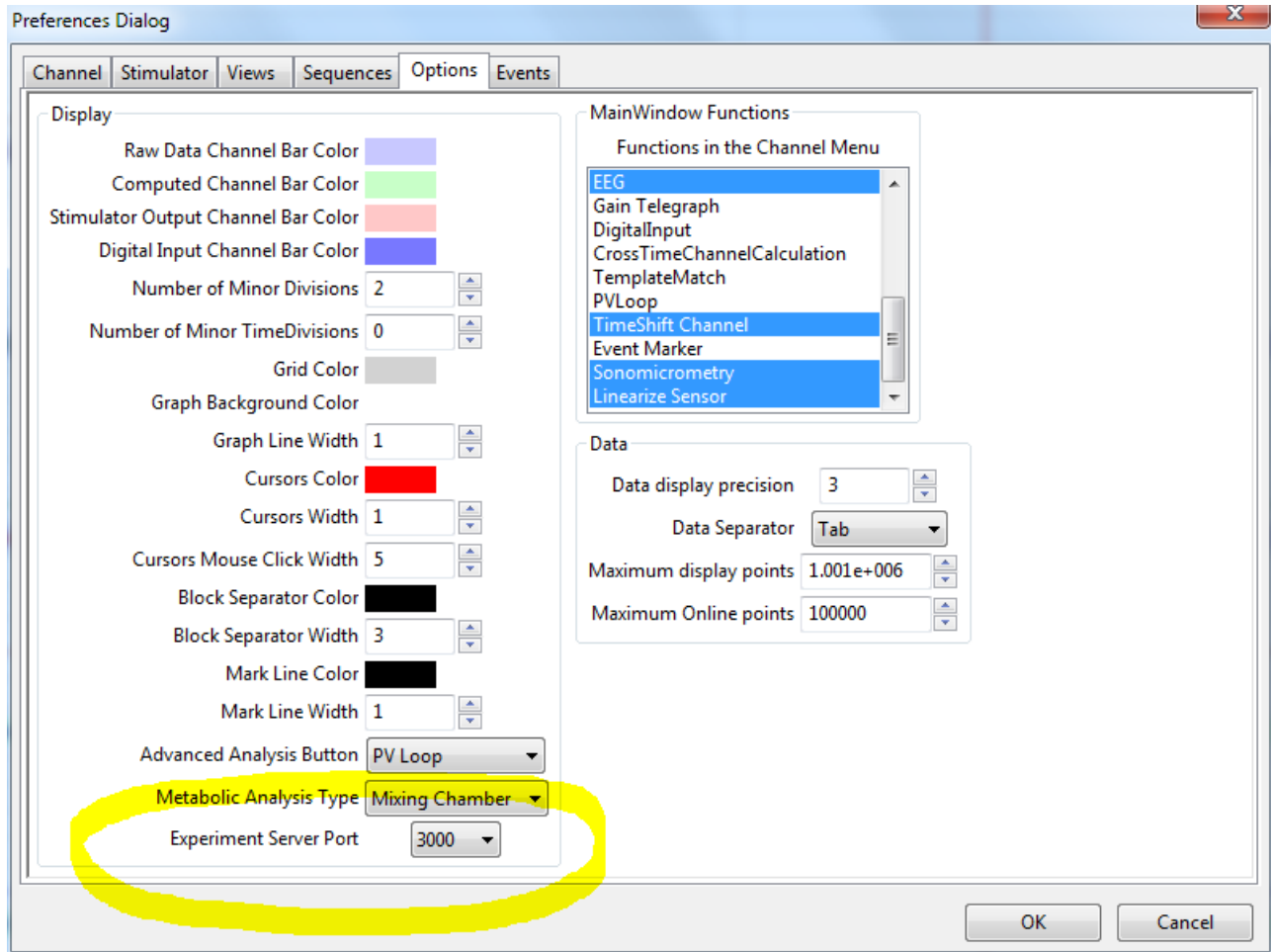


iWorxANT+ Interface.

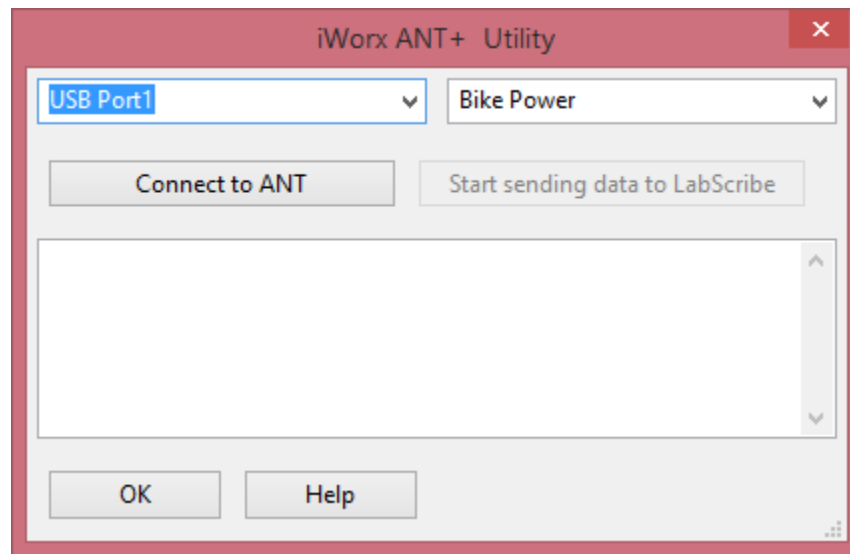
iWorxANT+ is a utility that reads the power, heart rate, and muscle oxygen values from an ANT+ device and sends it to LabScribe v3 to allow the recorded ANT+ variables to be used in metabolic calculations.

- Launch LabScribe v3. Go to Edit->Preferences, Option Tab. Check that the Experiment Server Port is set to 3000.

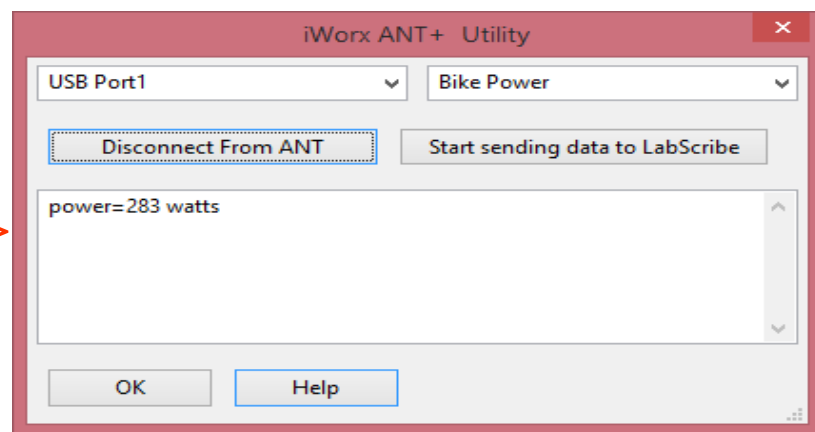
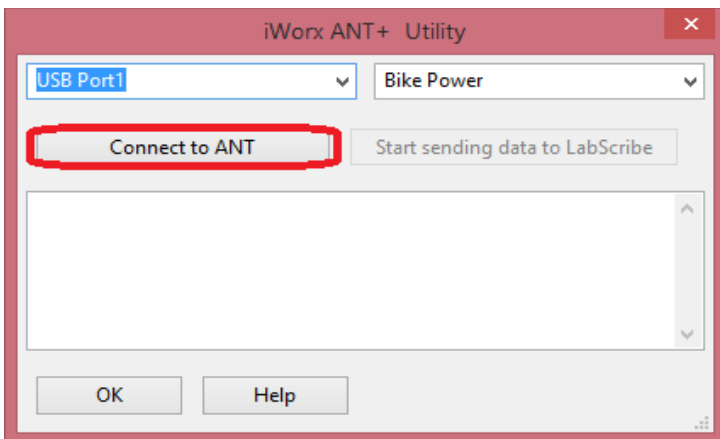
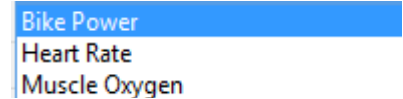


- Load the desired settings file in LabScribe v3 and click **Record** in LabScribe.

- Before starting the iWorx ANT+ Utility application, make sure that the ANT+ device is attached through a USB.
- Launch the iWorxANT.exe program.



- The ports detected will automatically appear on the first drop-down list. The first port that is detected will automatically be selected. If no ports are found then it will read “No ports found”. You will have to reconnect the ports then restart the program if this the case.
- The second drop-down menu will select the data being read in.
 - Bike Power
 - Heart Rate
 - Muscle Oxygen
- Click “Connect to ANT” to connect to the ANT+ device.

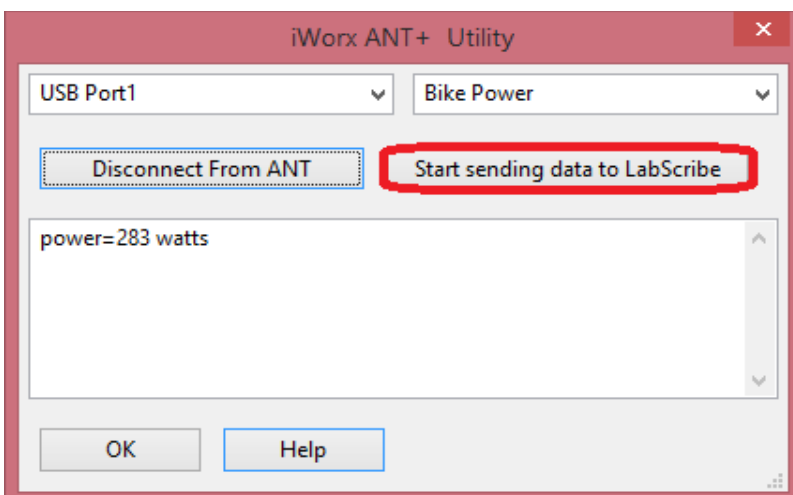
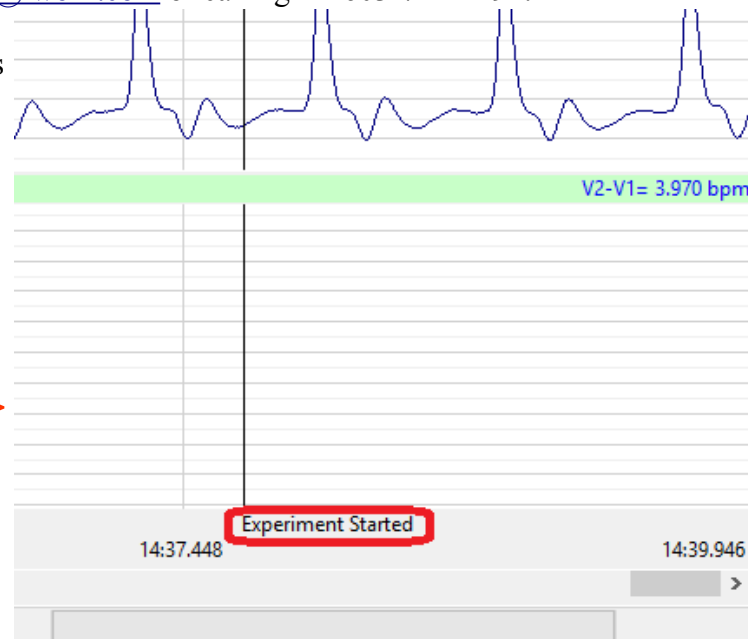


- Keep in mind that the “Connect to ANT” button is now a disconnect button.

- Make sure that LabScribe is open and recording data (otherwise refer to instructions on page 1)

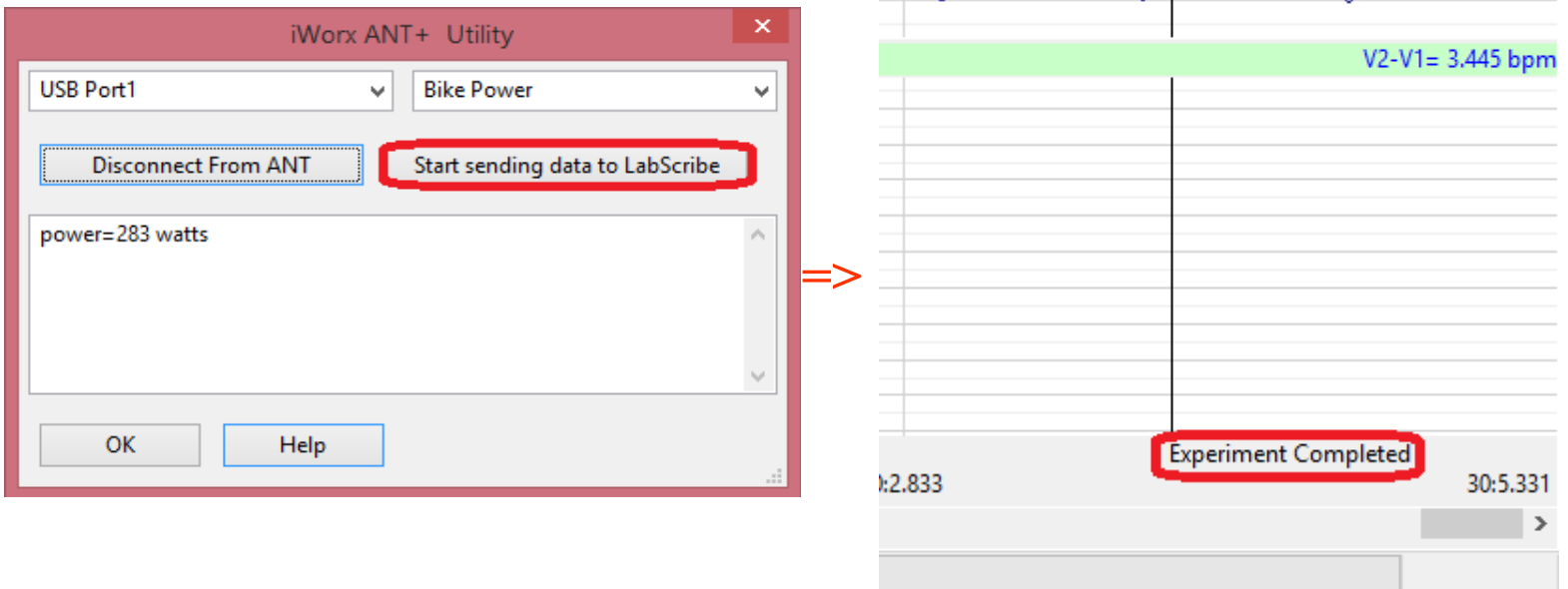


- If settings have been selected from both drop-downs then click the **Start sending Data to LabScribe** button. The first time you click this, the program will ask for the serial number. Please enter the provided serial number. If you do not have a serial number, contact iWorx Systems Inc. by either sending an email to info@iworx.com or calling +1-603-742-2492.
- The iWorxC2Interface will now connect to LabScribe v3 and start sending the power values to LabScribe.



- The data is instantly updated into LabScribe whenever it is altered.
- Power values are not displayed by default in the main window in LabScribe v3, you can view them in the marks window. They are automatically used by the Metabolic Calculation Analysis Module, if you do not select an Energy channel.

- When you want to stop sending data to LabScribe, click the *Stop sending Data to LabScribe* button.



- Click “Disconnect From ANT” to disconnect from the ANT device.

